

# Registration and Login

---

When a parent accesses txConnect, the following Login page is displayed. The parent needs to register as a new user.

txConnect

Welcome to txConnect for ROCKY MOUNTAIN ISD Help

**Login**  
Please enter your user name and password.  
User Name:   
Password:

**District Message**  
**Welcome to the TxEIS Student Presentation!**

**New User?**  
If you need to create an account, click [here](#)

**Forgot your Password?**  
If you need help recovering your password, click [here](#)

Version 2.3.5  
Licensed Materials - Property of Texas Computer Cooperative.  
Copyright © 2006 by Texas Computer Cooperative.  
All rights reserved.

Available languages: [English](#) [Español](#)

## How to Register as a New User

The registration process is **self-administered**, which means that the parent chooses his user name and password. If he forgets or loses his password, or wishes to change it, he will go through an automated process to reset his password.

The parent must provide at least one valid Student Portal ID, which the campus will provide. The parent must have a valid Student Portal ID for every student he wishes to add to his account.

From the **Login** page, click the link under **New User** to go to the Registration page. The Registration User Info - Step 1 of 3 page is displayed.

**User Name**

- 6 to 9 characters
- **NOT** case-sensitive.

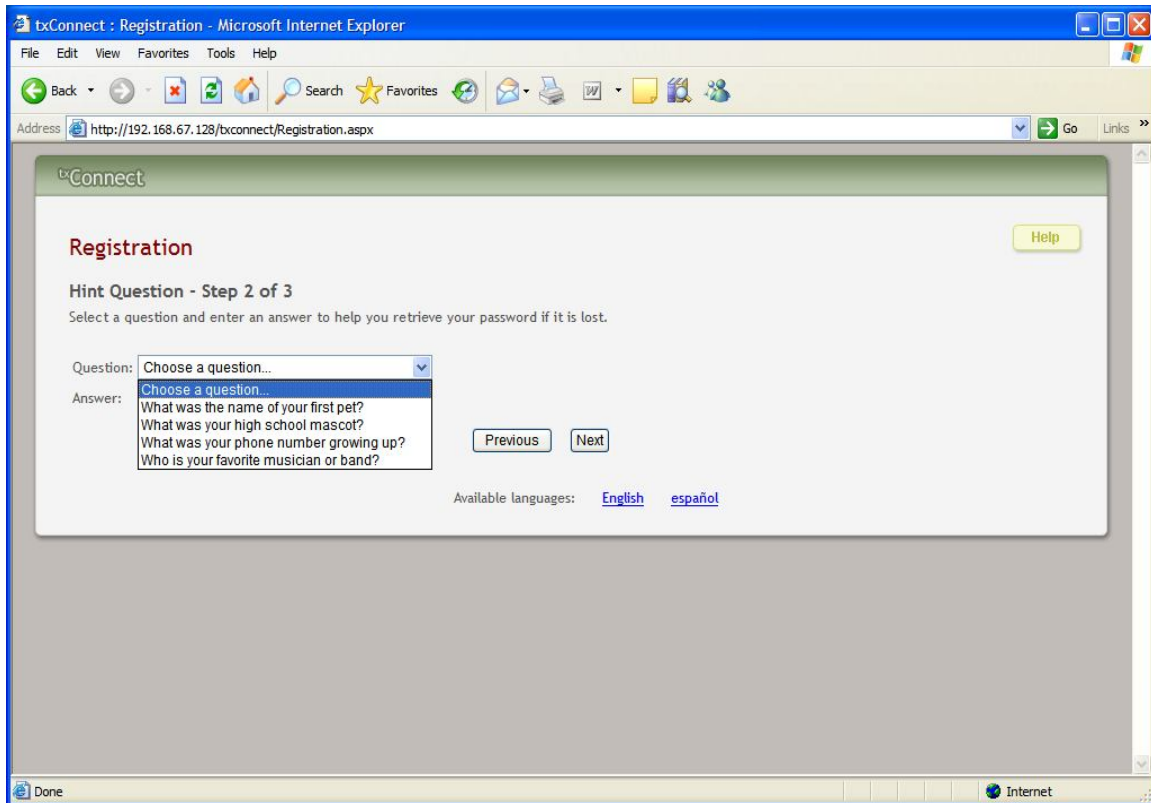
**Password**

- 6 to 9 characters
- **IS** case-sensitive.
- Must be a combination of three of the following: uppercase, lowercase, numeric, and/or punctuation.

## Step 1:

- In the **User Name** field, the parent enters a user name that will identify him when he logs on to txConnect, such as a combination of letters from his first and last names.
- The **user name** must be six to nine characters and **must be unique** (not used by anyone else in the district).
- The user name is not case-sensitive (i.e., it does not matter if it is uppercase or lowercase letters).
- If the parent types a user name that is already taken, the system will notify him that the user name is taken. Another user name needs to be entered.
- In the **Password** field, the parent enters a password that he will use when he logs on to txConnect.
- The password must be six to nine alphanumeric characters.

- It must be a combination of the following: uppercase, lowercase, numeric, and/or punctuation (e.g., aBc1234).
  - The password is case-sensitive (i.e., it must always be typed exactly as it is entered here, including uppercase and lowercase letters).
  - In the **Confirm Password** field, the parent retypes his password exactly as it was typed above. This step confirms that the parent typed his password as intended.
  - The **email** field is used to send the parent attendance, grade average, and assignment alerts. It is an optional field.
  - Click **Next**.
  - If all required data was not entered, a red message will appear to the right of each field that is missing data. That information must be provided before you can continue.
  - If the data was entered correctly, the Hint Question - Step 2 of 3 page is displayed.
-



## Step 2:

- In the **Question** field, the parent selects a question to which he will provide an answer. This question will be asked in the event that he loses his password.
- In the **Answer** field, the parent types the answer to the question. He will be required to answer the question correctly in order to recover his password. The parent should select a question for which he will easily remember the answer. Answers are case-sensitive (i.e., it must always be typed exactly as it is entered here, including uppercase and lowercase letters).
- Click **Next**.
- If the data was entered incorrectly, a red message will appear to the right of each field that has incorrect data. That information must be provided before you can continue.
- If the data was entered correctly, the Add Students - Step 3 of 3 page is displayed.

Connect

## Registration

Help

### Add Students - Step 3 of 3

Please provide a Student Portal ID and birth date for each student you wish to add.

Student Portal ID:

Student Birth Date:

Enter date in MM/DD/YYYY format.

Add

Added Students

(none)

Previous Finish

Available languages: [English](#) [español](#)

### Step 3:

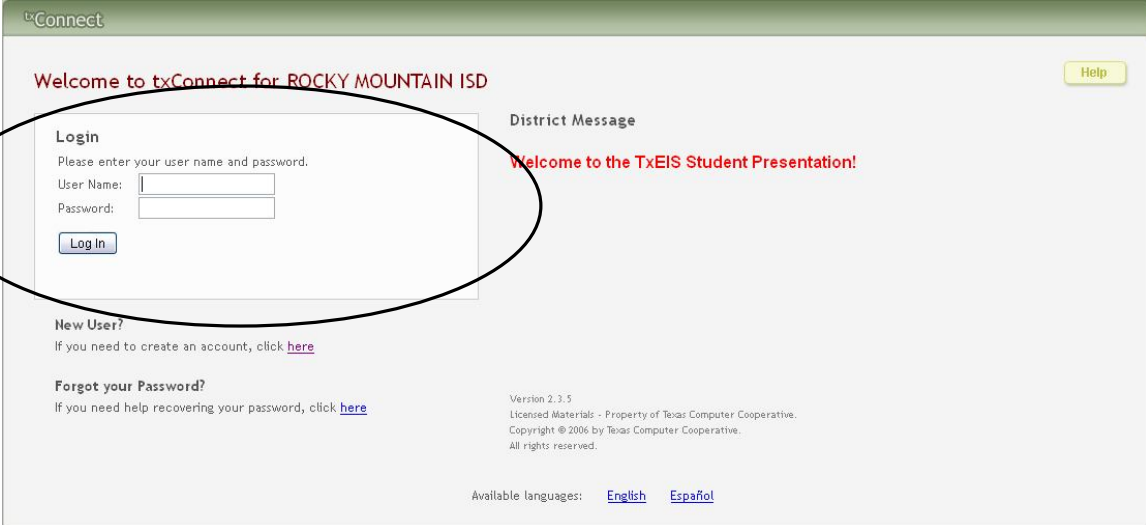
- In the **Student Portal ID** field, the parent types his student's portal ID provided by the campus. If he does not have this ID, he must contact the campus to get the ID. He cannot continue without entering a valid Student Portal ID. This is the Portal ID from page 2, in the document.
- In the **Student Birth Date** field, the parent types his student's complete birth date in the MM/DD/YYYY format (e.g., 01/19/1998). The date entered here must match the birth date in his student's record at the campus. He cannot continue without entering the correct birth date.
- Click **Add**. The student's name will appear in the **Added Students** box on the right side of the page. The parent must successfully add at least one student in order to create an account.
- Repeat the previous steps to add another student, or click **Finish**. The Summary page for the first student in the parent's alphabetical list is displayed.

## How to Log On

**Reminder:** A new user must create a user ID and provide a unique Student Portal ID for each student to gain access to students' records. District or campus administrators distribute the Student Portal IDs.

- From the Login page, in the **User Name** field, the parent types his **User ID**. The user ID is not case-sensitive.
- In the **Password** field, the parent types his **Password**. The typed text will be hidden. The password is case-sensitive.
- Click **Log In**. The student's Summary page is displayed.
- If the parent has more than one student in his account, the Summary page for the first student in his alphabetical list is displayed.
- If the parent entered an invalid user ID and/or password, an error message will prompt him to reenter the data.

**Warning:** If the parent has three unsuccessful attempts logging on (invalid user ID/password combinations), the system will lock out his account for 20 minutes. He should try logging on again after 20 minutes.



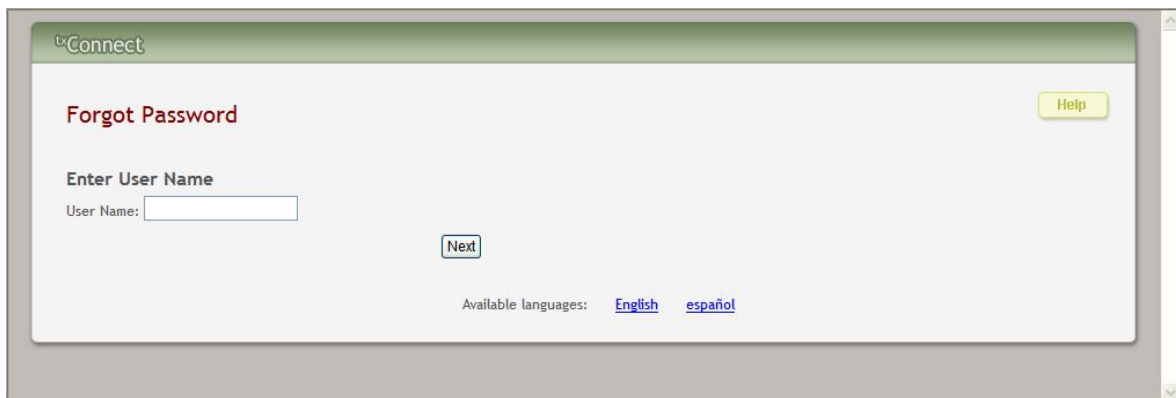
The screenshot shows the txConnect login interface for Rocky Mountain ISD. The page title is "Welcome to txConnect for ROCKY MOUNTAIN ISD". A "Help" button is in the top right. The main content area is divided into two columns. The left column contains a "Login" section with the text "Please enter your user name and password." and two input fields labeled "User Name:" and "Password:". Below these fields is a "Log In" button. The right column contains a "District Message" section with the text "Welcome to the TxEIS Student Presentation!". At the bottom of the page, there are links for "New User?" and "Forgot your Password?", version information (Version 2.3.5), copyright information (Copyright © 2006 by Texas Computer Cooperative), and language options (English and Español).

## How to Reset a Password

If the parent has forgotten his password, he can reset it using an automated process. He will be required to provide the answer to his hint question. With the correct answer, he can reset his password to a new password.

If he has forgotten his user name, he must re-register.

- From the **Login** page, click the link under **Forgot your Password** to go to the Forgot Password page. The Forgot Password Enter User Name page is displayed.



- In the **User Name** field, the parent types his user name.
- Click **Next**. The Answer Hint Question page is displayed with his hint question.



- In the **Answer** field, the parent types the answer exactly as he entered it when he registered in txConnect. (Later on whenever he updates the hint question in his account, that answer must be entered here.)
  - Click **Next**. The Set New Password page is displayed.
-

txConnect

## Forgot Password

Help

### Set New Password

Must be between 6 and 9 characters; must contain at least 3 of the following character types: uppercase, lowercase, numeric, punctuation.

New Password:

Confirm Password:

Finish

Available languages: [English](#) [español](#)

- In the **New Password** field, the parent enters a new password that he will use when he logs on to txConnect.
- The password must be six to nine alphanumeric characters.
- It must be a combination of the following: uppercase, lowercase, numeric, and/or punctuation (e.g., aBc1234).
- The password is case-sensitive (i.e., it must always be typed exactly as it is entered here, including uppercase and lowercase letters).
- In the **Confirm Password** field, the parent retypes his password exactly as it was typed above. This step confirms that he typed his password as intended.
- Click **Finish**. The Summary page for the first student in his alphabetical list is displayed.